

# SERIES 5A AND 5B VALVE STATUS MONITOR



 **Bray**<sup>®</sup>

THE HIGH PERFORMANCE COMPANY



Jamieson Equipment Company  
[www.jamiesonequipment.com](http://www.jamiesonequipment.com)  
toll free 800.875.0280

**INTRODUCTION**

The Bray Series 5A and 5B Valve Status Monitors (VSM) provide visual and electrical indication of position on any VDI/VDE 3845 compliant quarter-turn device. Our solutions enable end users to better monitor their process no matter the conditions.

**FEATURES**

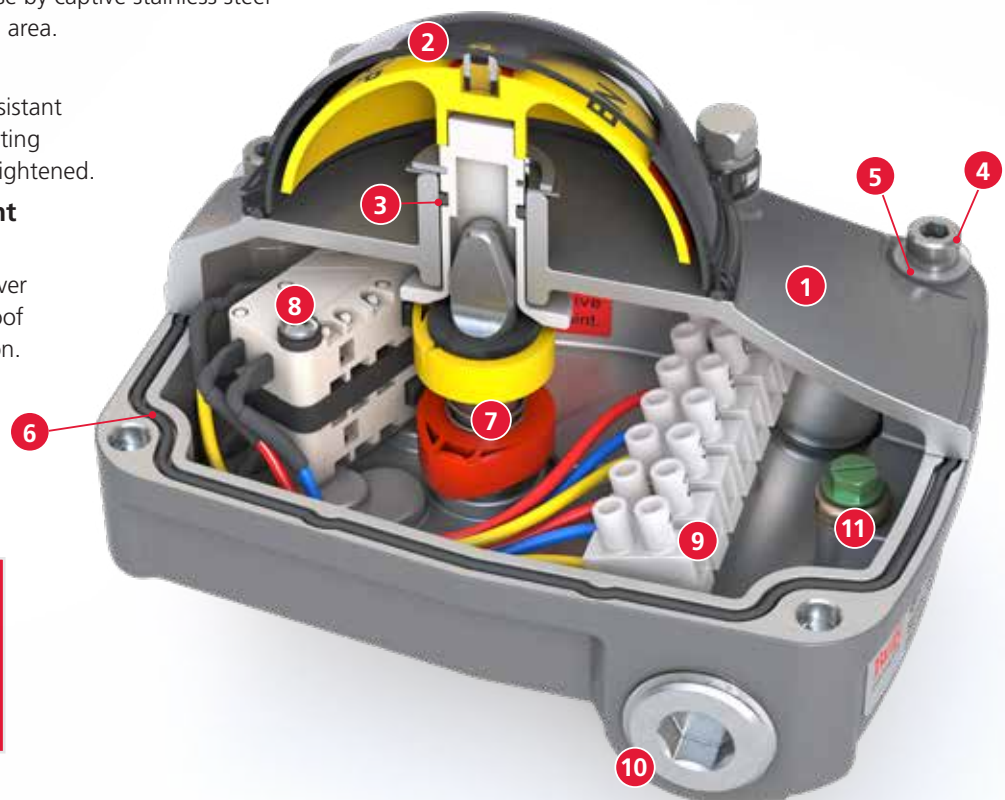
- 1 Enclosure**  
The compact low profile weatherproof VSM is UL certified NEMA Type 4, 4x and IP66/67. A die-cast aluminum cover and base coated with a polyester powder coat for exceptional corrosion, wear, impact and ultraviolet resistance.
- 2 High Visibility Position Indicator**  
Visual open and closed indication is provided with an impact resistant dome style indicator. Inverting the open and closed visual output is easily done by removing the dome and rotating it 90 degrees. There is no need to remove the cover and expose internal wiring of the VSM to change position indication.
- 3 Stub Shaft Secondary Seal**  
Ensures indicator area is separate from the VSM's internals. Provides a secondary seal to prevent water ingress should the dome or dome seal become compromised due to adverse site conditions.
- 4 Captive Cover Bolts**  
The cover is attached to the base by captive stainless steel bolts placed outside the sealing area.
- 5 Protective Washers**  
Clear, nonmetallic, corrosion resistant washers are used to ensure coating integrity when cover bolts are tightened.
- 6 O-Ring Seal For Watertight Enclosure**  
The O-ring seal between the cover and base provides a weatherproof seal preventing internal corrosion.

**CERTIFICATIONS**

- IP66/67
- NEMA Type 4X
- cULus
- CE
- UL50E Salt Spray



- 7 Sensor Cams**  
Splined cam design allows for easy and accurate setting of switch activation without the use of tools.
- 8 Limit Switches**  
Multiple switch options and configurations to meet connectivity requirements.
- 9 Terminals**  
Clearly marked terminal blocks are angled towards the user to ensure easy access.
- 10 Conduit Entries**  
Two conduit entries available in either imperial or metric threads.
- 11 Grounding**  
Green color-coded, easy-access grounding bolt.



**SERIES 5A**

- Single terminal strip
- Low weight
- Compact housing

**High Visibility, Shatter Resistant Dome**

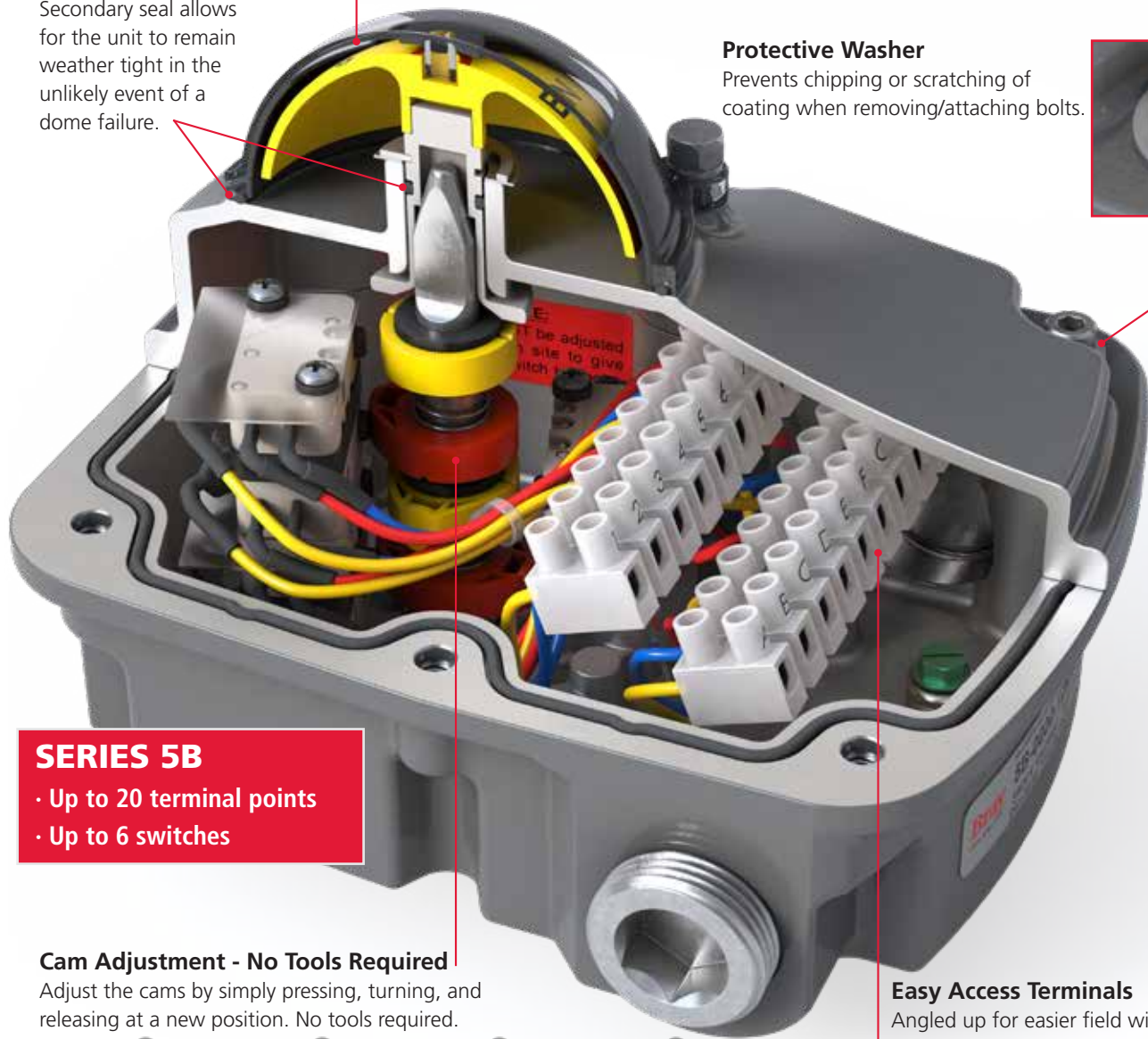


**Double Seal**

Secondary seal allows for the unit to remain weather tight in the unlikely event of a dome failure.

**Protective Washer**

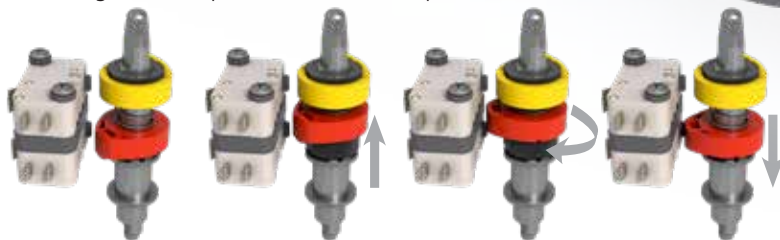
Prevents chipping or scratching of coating when removing/attaching bolts.



**SERIES 5B**  
 · Up to 20 terminal points  
 · Up to 6 switches

**Cam Adjustment - No Tools Required**

Adjust the cams by simply pressing, turning, and releasing at a new position. No tools required.



**Easy Access Terminals**

Angled up for easier field wiring.



## FLEXIBLE MOUNTING OPTIONS

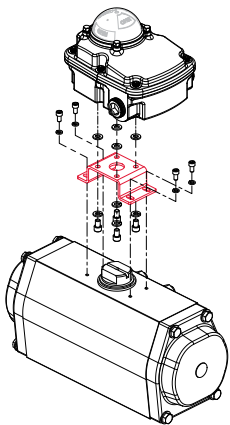
Users have the ability to mount the VSMs in both perpendicular and parallel orientations without changing brackets. The visual indication can also be inverted without removing the cover. This is done by rotating the indicator dome 90 degrees.



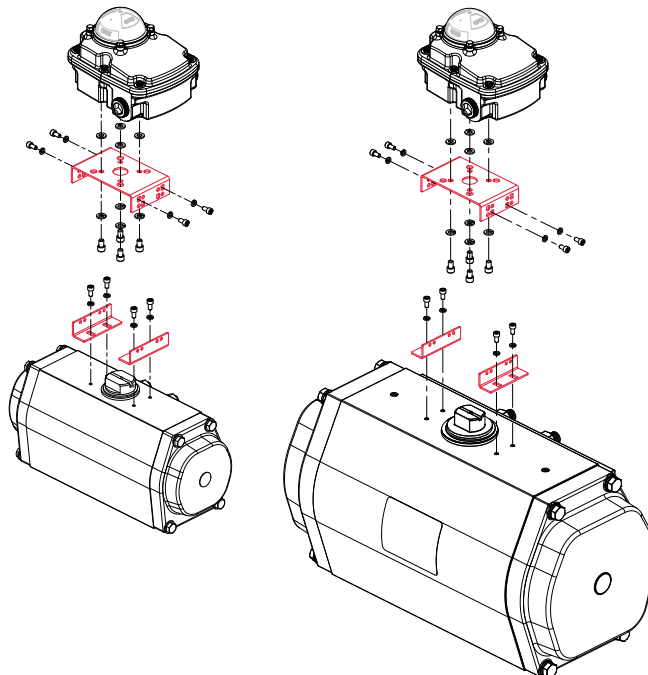
## UNIVERSAL NAMUR MOUNTING BRACKET

Bray's VSMs can be mounted to most NAMUR compliant rack and pinion, scotch yoke and other quarter-turn actuators.

> Fixed Bracket



> Adjustable bracket for both 30x80 and 30x130 NAMUR mounting pads (fits all S92/93/98 actuators)



> Common mounting F05 pattern ISO5211



## PROXIMITY SWITCHES

Our proximity switches offer reliable inductive sensing in both 2-wire and 3-wire configurations.

- > DC and AC versions available
- > CE and cULus Certified on most configurations

## INDICATION SWITCH OPTIONS

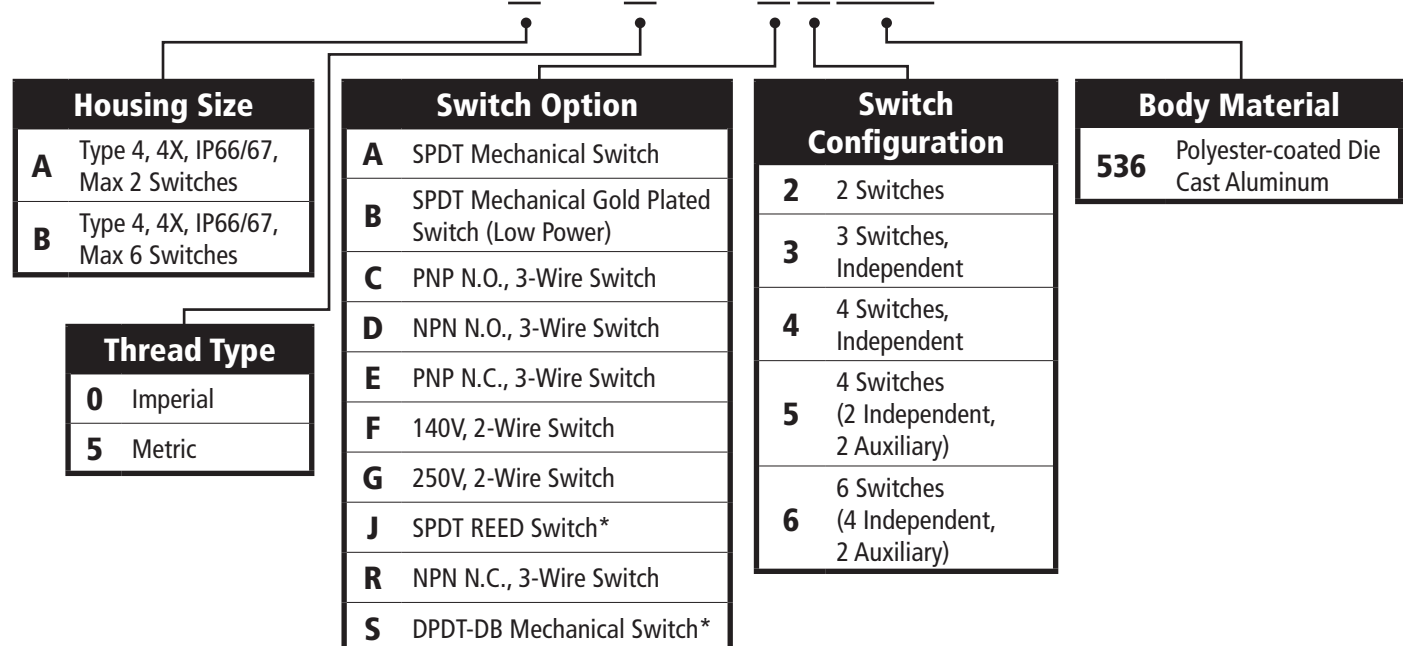
Bray's VSM product line is offered with multiple indication switch options to better suit the end user's requirements.



		S5A	Max Qty.	S5B	Max Qty.
MECHANICAL SWITCHES	SPDT Mechanical Switch	✓	2	✓	6
	SPDT Mechanical Gold Plated Switch (Low Power)	✓	2	✓	6
	DPDT-DB Mechanical Switch		N/A	✓	2
PROXIMITY SWITCHES	PNP N.O., 3-Wire Switch	✓	2	✓	6
	NPN N.O., 3-Wire Switch	✓	2	✓	6
	PNP N.C., 3-Wire Switch	✓	2	✓	6
	NPN N.C., 3-Wire Switch	✓	2	✓	6
	140V, 2-Wire Switch	✓	2	✓	6
	250V, 2-Wire Switch	✓	2	✓	6
	SPDT Reed Switch		N/A	✓	2

## PART NUMBERING SYSTEM

### 5X000X-126X X XXX



\*Not available on 5A